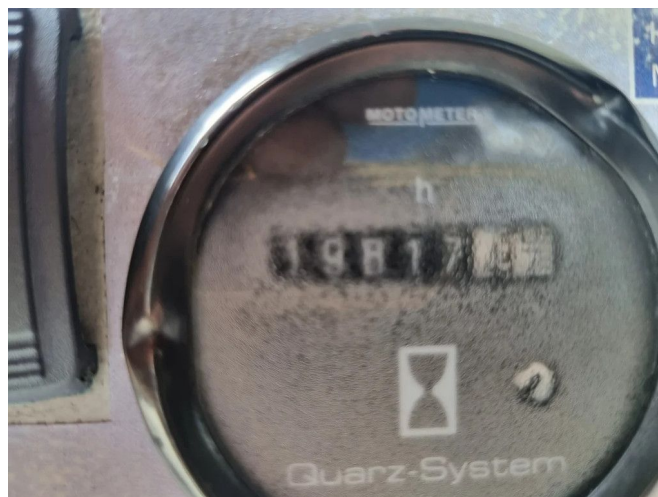


BBA BA100K D193

GENERAL INFORMATION

ID	23P00150
Make	BBA
Year	2008
Construction	Wastewater pumps
Fuel	Diesel
Weight	1.100 kg
Power kw	5
Power hp	7
Length	228 cm
Width	105 cm
Height	141 cm



TECHNICAL INFORMATION

- 4" (4 inch) connection parts , Perrot/Cardan/Type C • available with any desired quick coupling. • Can be used immediately • Channel pump impeller • in stock! • PUMPED UP AND READY TO FLOW! • self-priming (dry)
- Self-priming (dry, vacuum assisted) • Spare parts available, usually in stock • Stack frame • Suitable for pumping bentonite and drilling emulsions • Suitable for pumping sewage • Suitable for pumping surface water / construction site water • SUPER silent housing (SUPER quiet) • Supported by van vacuum pump • Unlimited dry running • We provide appropriate documentation for the

DESCRIPTION

Damages: none

We have several of these machines in stock, with div hours and years.
 Directly available!

The pumps from the BA series are designed with the emphasis on reliability, durability and efficiency. Thanks to their fully mechanical vacuum system, these pumps prime quickly even without liquid in the pump housing. Due to the heavy construction of both the pump and the casing make the pumps of the BA series are ideal for use in the contracting and rental market.